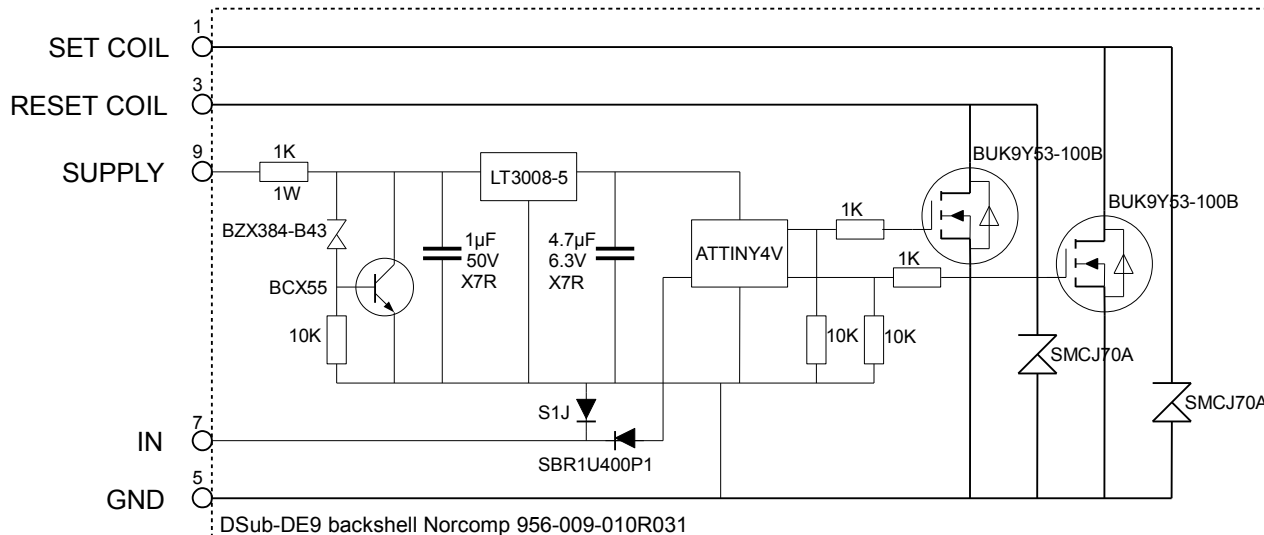


Monostable relay type control for a bistable relay with 2 coils

The relay is open when the input is high or open, closed when the input is shorted to ground.

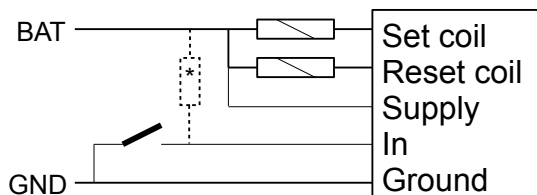
The operation of the controlled relay differs from that of a common monostable relay in some respects.

- | | | | |
|----|---|---|---|
| 1. | Very low input switched current (100 μ A) | → | use a logic type switch with gold plated contacts |
| 2. | Needs power present while opening | → | evaluate progressive system power-down |
| 3. | Non-zero current draw when open (5 μ A) | → | ignore |
| 4. | Very low current draw when closed (0.4 mA) | → | ignore |
| 5. | Switching frequency is limited to 0.4 Hz | → | ignore |



Normal operation requirements and properties

		Quantity	Min	Typ	Max	Unit	Req
Pin	SET COIL	Supply volts			70	V	x
	RESET COIL	Pulse current			5	A	x
		On resistance		0.05	0.13	Ω	
		Leakage @25 °C (each)		0.4	1.2	μ A	
		Leakage @65 °C (each)			10	μ A	
	SUPPLY	Volts	6		40	V	x
		Current (off)		4		μ A	
		Current (on) including input current		0.4		mA	
	IN	Open (off) – volts	3.0		400	V	
		Open (off) – current sourced			30	μ A	x
		Closed (on) – volts			1.0	V	x
		Closed (on) – current sourced	90		250	μ A	
Timing		Switch debounce period		20		ms	
		Pulse period		50		ms	
		Dead time after Set coil pulse (off→on)		200		ms	
		Dead time after Reset coil pulse (on→off)		2000		ms	



* a pull-up resistor can be added if either:

1. a mechanical switch is used that does not have gold plated contacts and needs "wetting current"
2. an electronic switch is used with more than 30 μ A internal leakage at 3V