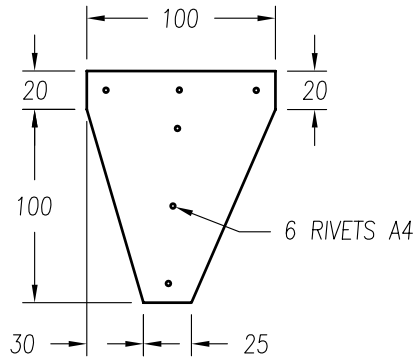
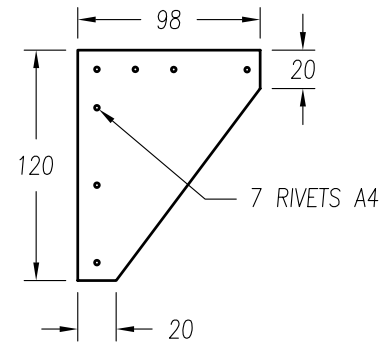


SUPPLEMENTARY AILERON GUSSETS

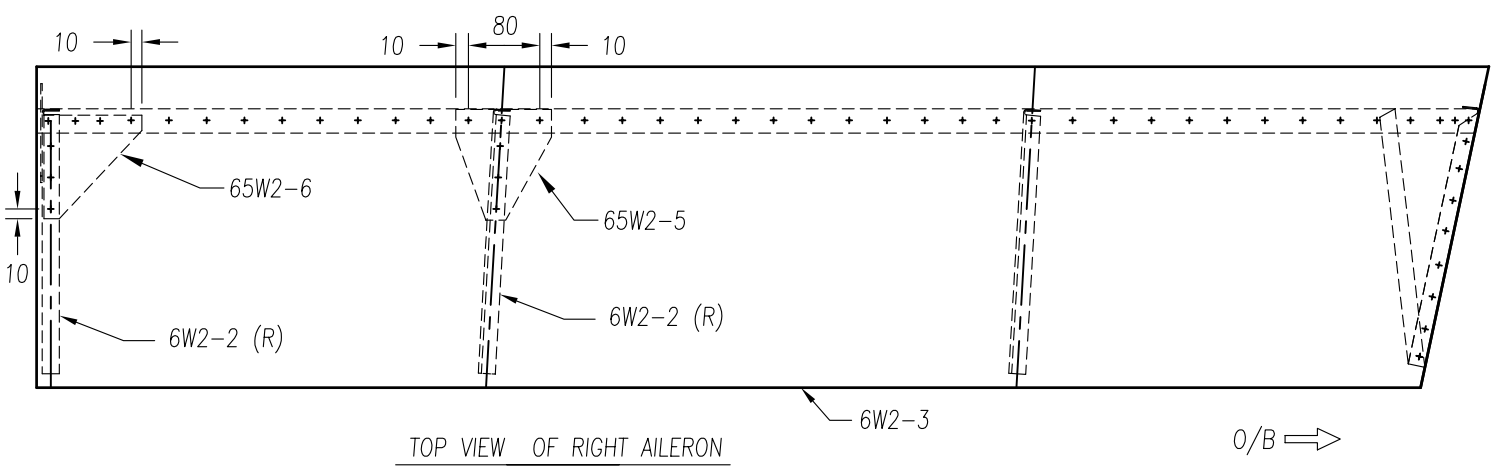
Aircraft are designed to meet moving air masses head-on. When tied-down outside rather than inside a hangar, an aircraft can be subjected to strong winds from any direction. Zenair has received reports of small unseemly kinks in the aileron skin near the inboard hinge area, presumably caused while the aircraft was parked outside without a control lock in place; installation of this gusset is recommended to reduce the risk of potential damage to the area. These gussets are recommended for the Zodiac CH601XL and are included standard on the Zodiac CH650. See the drawing below for details.



65-W-2-5 **AILERON RIB #2 GUSSET**
t=.025" 6061-T6 (2 REQ'D)



65-W-2-6 **AILERON RIB #1 GUSSET**
t=.025" 6061-T6 (2 REQ'D)



TOP VIEW OF RIGHT AILERON

Control locks are highly recommended to prevent damage while the aircraft is on the ground. Below are a couple pictures of simple control locks that can easily be made at home from a couple tennis balls or plywood and some bungee cord.



Above: Aileron control lock made from two tennis balls and a bungee cord.



Above: Elevator control lock made from two pieces of plywood and a bungee cord.